



Industrial CommLED lamps series HB9HT Professional for high temperatures

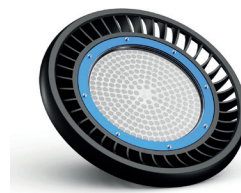
Series HB9HT

The highest quality CommLED industrial lamps for high temperatures. Built on the basis of the highest quality LumiLEDs diodes, expanded aluminum radiator responsible for temperature dissipation, reliable CommLED power supply with the highest quality components guaranteeing work up to 90°C, and aluminum lampshade limiting glare. Product for use in industry in areas with high ambient temperatures.

Advantages of the product

- luminous flux > 120-140 lm / W
- LEDs brand - LumiLEDs
- warranty up to 7 years (2 years: up to 80 ° C / 3 years: up to 70 ° C / 4 years: up to 60 ° C / 5 years: up to 50 ° C)
- low luminous flux decrease (LM-80)
- extensive temperature exhaust system
- construction designed for high temperatures (glass, aluminum reflector)
- dedicated power system for high temperatures
- power regulation possibility
- good price

Product photos



Product application

- industrial factories
- production halls
- logistic objects
- sports facilities
- steelworks
- cold stores
- warehouses
-



Product variants



Technical Parameters

Model	Nominal power	Nominal luminous	Weight [kg]	LEDs quantity
CS-HB9HT-100	100W	>13000-14000 lm	6.5	252 / SDM 3030
CS-HB9HT-120	120W	>14000-15000 lm	6.5	252 / SDM 3030
CS-HB9HT-150	150W	>18750-19500 lm	6.5	252 / SDM 3030
CS-HB9HT-180	180W	>21600-22500 lm	7.0	336 / SDM 3030
CS-HB9HT-200	200W	>24000-25000 lm	7.0	336 / SDM 3030

General informations

LED brand	LumiLEDs (Nichia option)
Power supply brand	CommLED
Lifetime	60000h (100000h option)
IP class	IP65
Energy class	A +
Safety class	I
IK class	IK07
Certifications	CE, Rohs
Control options	Potentiometer mechanical adjustment
Warranty	up to 7 years (* warranty conditions) up to 2 years (up to 80 ° C) up to 3 years (up to 70 ° C) up to 4 years (up to 60 ° C) up to 5 years (up to 50 ° C)

Electrical information

Input voltage	90-305VAC
Input frequency	47-63 Hz
Power factor (PF)	0.9
Power supply protection	overvoltage protection, overheating, short circuit

Inrush current

100W / 150W: COLD START 70A(twidth=510us measured at 50% Ipeak) at 230VAC
200W: Cold Start 75A(twidth=570us measured at 50% Ipeak) at 230VAC

Mechanical Information

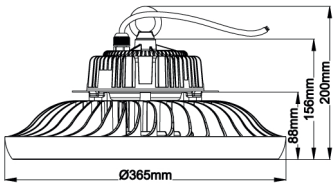
Mounting type	suspended
Housing color	black, silver reflector
Housing material	aluminum , steel, PC
Optics type	glass, aluminum reflector
Range of working ambient temperature:	-30 ° to + 90 ° C

OPTICAL INFORMATION

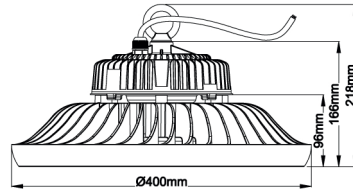
Lamp luminous flux	120-140 lm/ W
Light distribution angle	90 °
CRI / Ra	> 80
CCT	3000K, 4000K, 5000K, 6000K



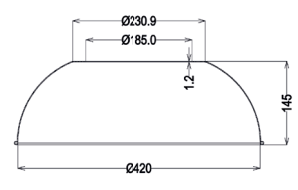
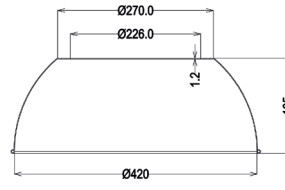
Technical Drawing



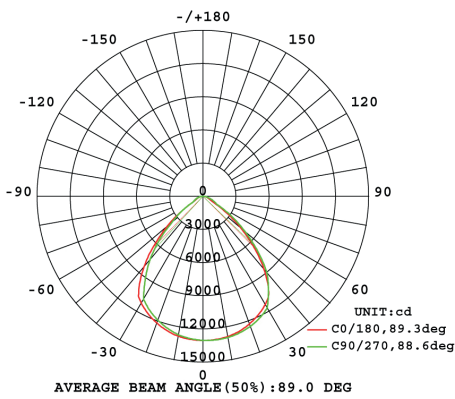
100W / 120W / 150W



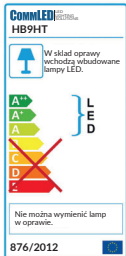
180W / 200W



Light Curve



Energy label



Informations notes

We reserve the right to change the data contained in this card
 Parameter value +/- 5%
 General warranty terms and conditions are available at www.commled.eu
 Creation date: September 2017